

# ENVIRO-BEAM™ SIDE PLATE CONNECTION

## CONNECTION CONFIGURATION AND ALLOWABLE LOAD CAPACITY (lbs)

### DOUBLE LINE CONNECTION

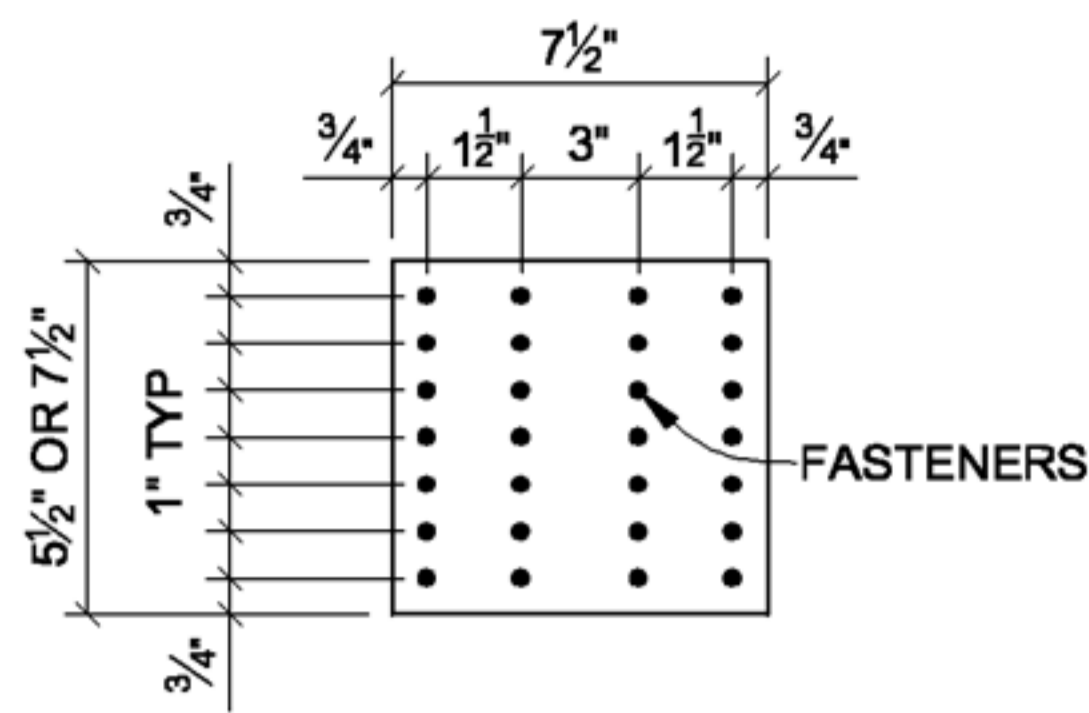
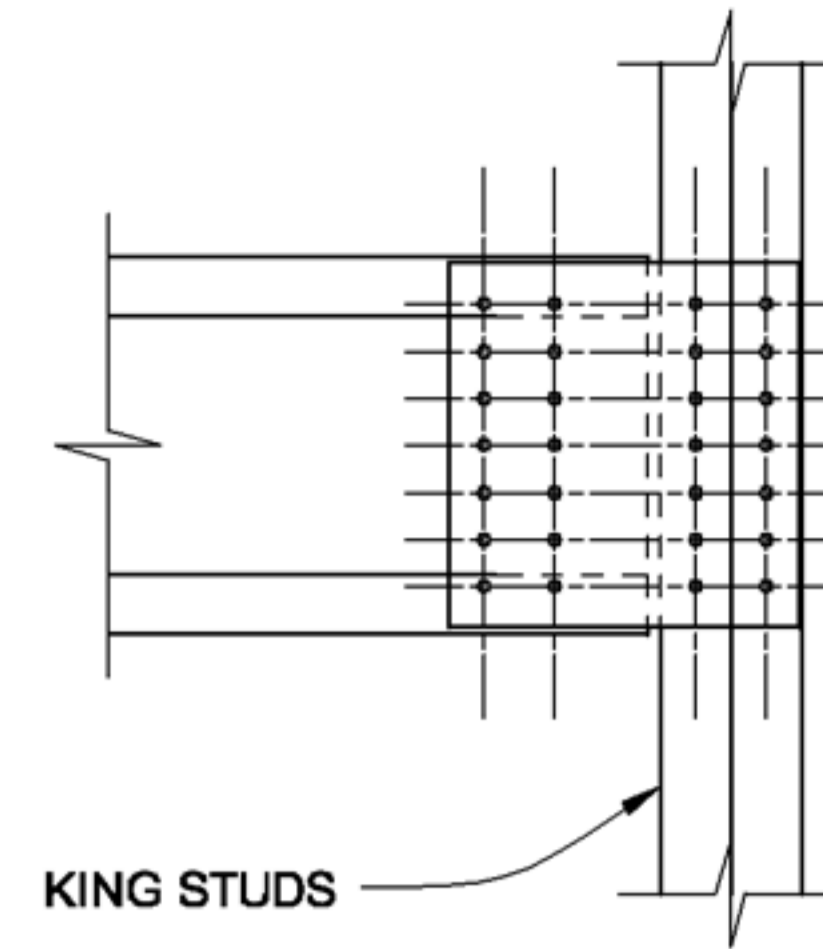
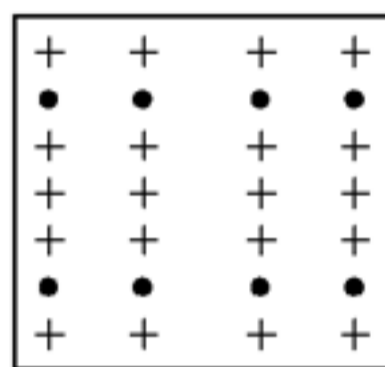


PLATE DIMENSIONS



DOUBLE LINE IN STUDS

#### 2 ROWS



8 SCREWS PER PLATE

#### MINIMUM 43 MIL PLATE, BEAM AND STUD

##### FASTENER CAPACITY

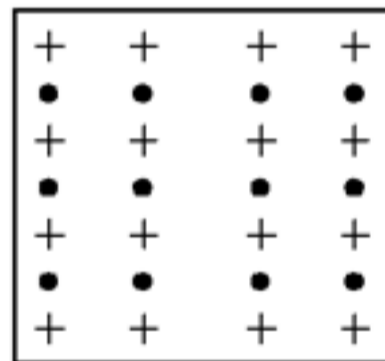
No. 10 SMS	694#
No. 8 SMS	643#
Teks Pins	568#

#### MINIMUM 54 MIL PLATE, BEAM AND STUD

##### FASTENER CAPACITY

No. 10 SMS	976#
No. 8 SMS	907#
Teks Pins	729#

#### 3 ROWS



12 SCREWS PER PLATE

#### MINIMUM 43 MIL PLATE, BEAM AND STUD

##### FASTENER CAPACITY

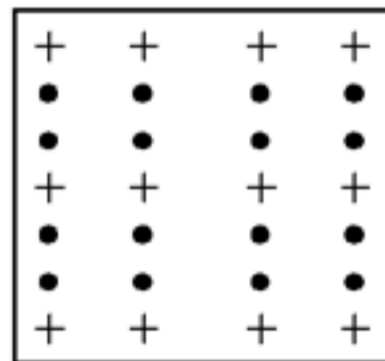
No. 10 SMS	814#
No. 8 SMS	755#
Teks Pins	665#

#### MINIMUM 54 MIL PLATE, BEAM AND STUD

##### FASTENER CAPACITY

No. 10 SMS	1144#
No. 8 SMS	1064#
Teks Pins	855#

#### 4 ROWS



16 SCREWS PER PLATE

#### MINIMUM 43 MIL PLATE, BEAM AND STUD

##### FASTENER CAPACITY

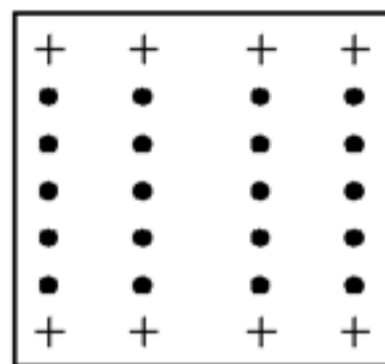
No. 10 SMS	1114#
No. 8 SMS	1033#
Teks Pins	912#

#### MINIMUM 54 MIL PLATE, BEAM AND STUD

##### FASTENER CAPACITY

No. 10 SMS	1567#
No. 8 SMS	1456#
Teks Pins	1170#

#### 5 ROWS



20 SCREWS PER PLATE

#### MINIMUM 43 MIL PLATE, BEAM AND STUD

##### FASTENER CAPACITY

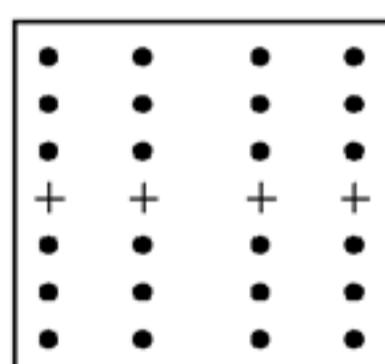
No. 10 SMS	1223#
No. 8 SMS	1135#
Teks Pins	1002#

#### MINIMUM 54 MIL PLATE, BEAM AND STUD

##### FASTENER CAPACITY

No. 10 SMS	1720#
No. 8 SMS	1600#
Teks Pins	1285#

#### 6 ROWS



24 SCREWS PER PLATE

#### MINIMUM 43 MIL PLATE, BEAM AND STUD

##### FASTENER CAPACITY

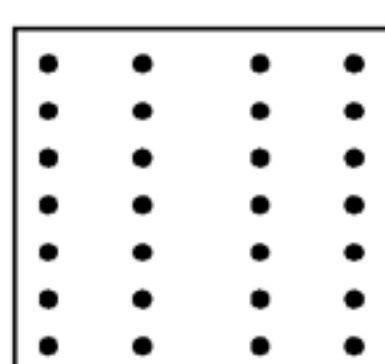
No. 10 SMS	2050#
No. 8 SMS	1902#
Teks Pins	1679#

#### MINIMUM 54 MIL PLATE, BEAM AND STUD

##### FASTENER CAPACITY

No. 10 SMS	2884#
No. 8 SMS	2681#
Teks Pins	2154#

#### 7 ROWS



28 SCREWS PER PLATE

#### MINIMUM 43 MIL PLATE, BEAM AND STUD

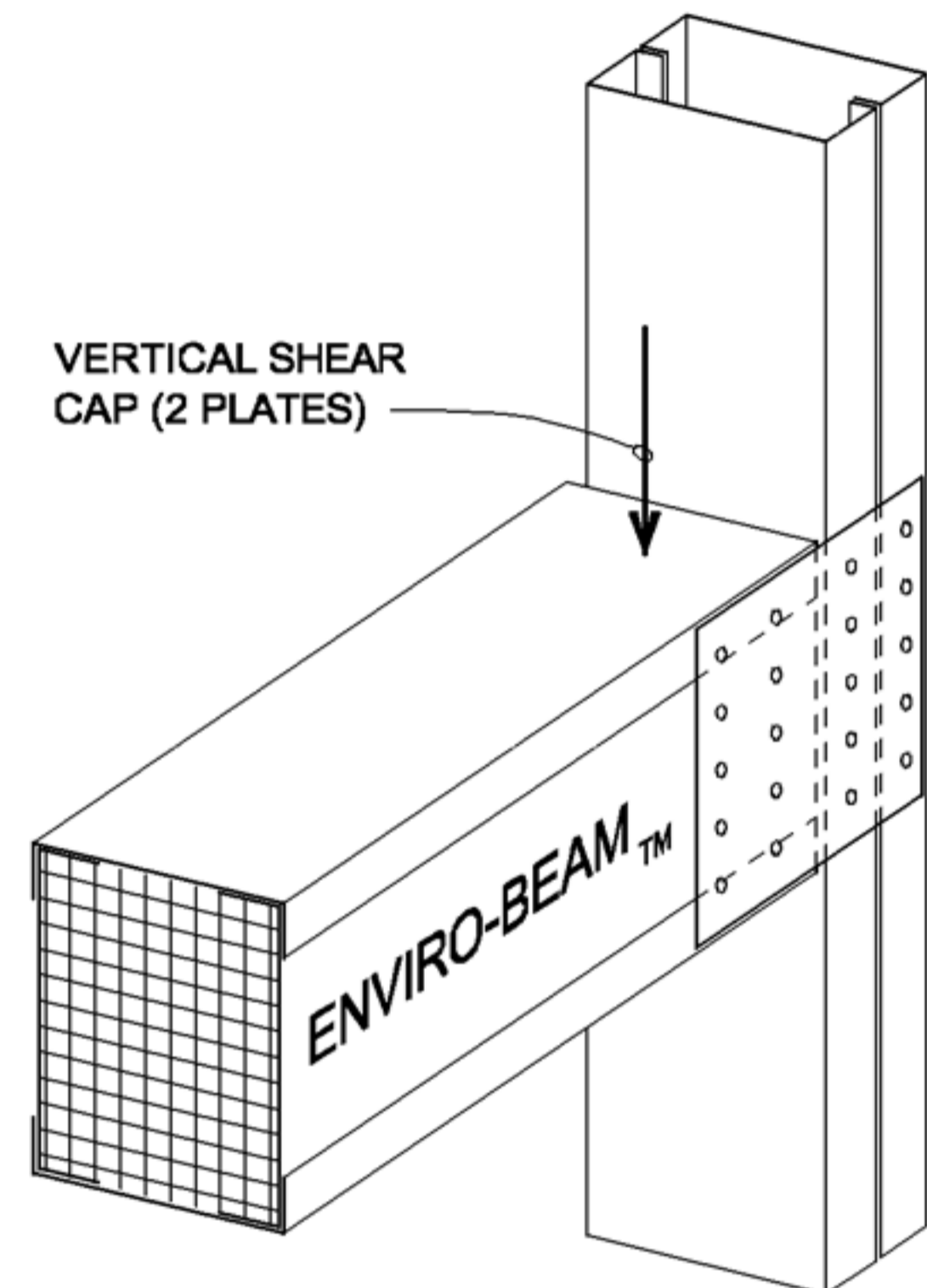
##### FASTENER CAPACITY

No. 10 SMS	2168#
No. 8 SMS	2011#
Teks Pins	1775#

#### MINIMUM 54 MIL PLATE, BEAM AND STUD

##### FASTENER CAPACITY

No. 10 SMS	3050#
No. 8 SMS	2836#
Teks Pins	2278#



#### Notes:

- Capacities are allowable loads for connection configurations shown based on the following:
  - Minimum steel grade of 33,000 psi
  - Capacities based on 2001 NAS Section E4.3 (Shear)
  - Capacities are for two plates, one each face of header.
- Screws shall be self-drilling, self-tapping #8 minimum. Optional: Gun-nail Tekpin Fasteners.
- Installation contractor is responsible to place screws in the patterns and spacing shown for these capacities to be valid.
- Connections have been checked for instantaneous center of rotation for the screw patterns shown.
- Screw patterns and load resisting capacities shown here are for the convenience of the designer and shall be verified by a qualified design professional as being appropriate for their intended use and specific application, and for compliance with relevant specification and building code requirements.
- Capacities for screw patterns, connection materials or uses other than shown here shall be determined by a qualified design professional responsible for the project design. Performance of these connection configurations or other configurations not shown here are the sole responsibility of the design professional or the installation contractor. ENVIRO-BEAM™ assumes no liability for the use or misuse of this information.